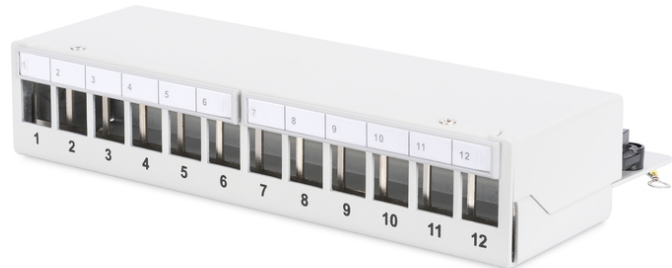


DIGITUS Professional Desktop Modular Patch Panel, shielded, 12-port

DN-93706
EAN 4016032435242



Modular Desktop Patch Panel, shielded 12-port, light grey

The Desktop Patch Panels from DIGITUS® are the ideal solution for SoHo applications (Smart Office Home Office). The fully shielded RJ45 sockets provide an optimal stability for your cables with best performances.

Applicable for SOHO solutions

- Patch Panel for Keystone Modules

- Shielded
- Ports: 12
- Transparent label fields
- Color light grey (RAL 7035)
- DIN-rail mount (in combination with AN-25188)
- Ports: 12
- Color: light grey, RAL 7035
- Units: 1

Logistics						
	Number (pcs)	Weight (kg)	Depth (cm)	Width (cm)	Height (cm)	cm ³
Packaging Unit Carton	20	16.80	31.00	28.00	58.00	50,344.00
Packaging Unit Inside	1	0.84	0.00	0.00	0.00	0.00
Packaging Unit Single	1	0.84	0.00	0.00	0.00	0.00
Net single without Packaging	1	0.00	0.00	0.00	0.00	0.00

More images:

